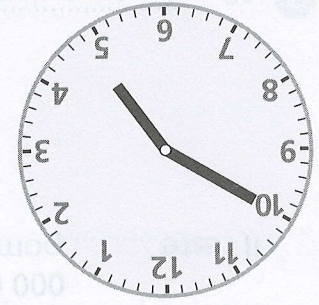
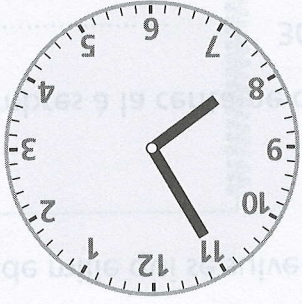


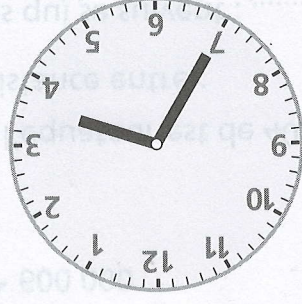
.....



.....



.....



.....

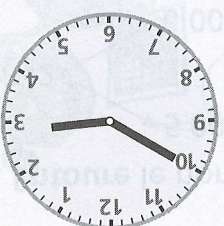
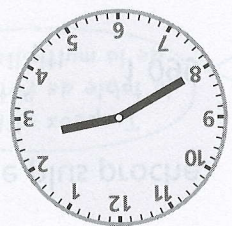
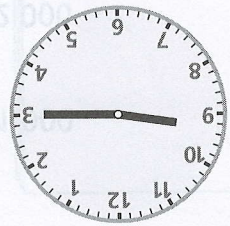
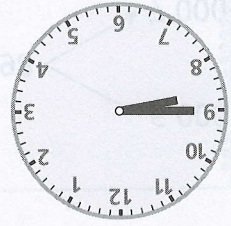
2 Écris de deux façons différentes l'heure du matin indiquée par chaque cadran.

9 h moins le quart

2 h 40

9 h et quart

3 h moins 10



2 h 50

8 h 45 min

9 h 15

3 h moins 20

1 Entoure de la même couleur les heures équivalentes.

Prénom Date